

Information  
+ Innovation  
+ Design =  **ingen konst ab**

## elsebeth lavold designer's choice The Walk in the Park Collection

**Start  
Upp/Up**

**Beställ vårt  
nyhetsbrev**

**Sign up for our  
newsletter**

**Allmänna länkar  
längst ner  
på sidan**

**General links  
at the bottom  
of the page**

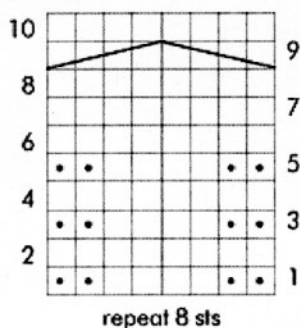
### Corrections for The Walk in the Park Collection

The below applies to the designs Margaretha and Viveca, and to the abbreviations list on p. 62. There is also a clarification for Stina.

#### **Margaretha, p. 13:**

The chart for the design Margaretha was unfortunately not included the printed book. The chart is published below (right-click on the image to download or print). We have also made a **chart pdf** (22 kB), designed as an add-in page for the book, that you can view directly on your screen, or download and print locally (right-click on the link to download, left-click to view on your screen).

Margaretha chart:



#### **Viveca, p.38:**

Left front: I've managed to switch sides, so the instructions for the pattern is for the right front, and therefore the left front should just be reversed; that is - you start with an edge st, then the cable section, then the block pattern and end with an edge st.

For both left and right front, the first row is a wrong side row and you start the block pattern on row 2 and work row 0 of chart for 13 rows (I included the cast on row in my row count when I wrote 14).

#### **P. 38, chart:**

Two symbols, used in the chart, didn't make it to the chart symbols list on p. 63. These are:

