

LYNDEN

pullover



Sizes: XS (S, M, L, XL, XXL) (shown in size XS)

FINISHED MEASUREMENTS

Chest: 34 (38, 42, 46, 50, 54)" / 86 (96.5, 106.5, 116.5, 127, 137)cm

Length: 22¼ (22¾, 23¼, 23½, 23¾, 24)" / 56.5 (57.5, 59, 59.5, 60, 61)cm

YARN & NOTIONS

6 (7, 7, 8, 8, 9) hanks Sabine in color #04 Berry Farm

US 5 (3.75mm) 32" / 80cm and 24" / 60cm circular needles, and set of 4 or 5 double-pointed needles

US 7 (4.5mm) 32" / 80cm and 24" / 60cm circular needles, and set of 4 or 5 double-pointed needles. Adjust needle sizes to obtain correct gauge if necessary.

Cable needle, 2 colors of stitch markers, tapestry needle

Gauge: 19 sts and 30 rows = 4" / 10cm in St st on larger needles, after blocking

Note: The body of the sweater is worked in the round from the lower edge to the underarm. Each sleeve is worked from the cuff to the underarm. The pieces are then joined on one circular needle and shaped with raglan decreases to the neckline. Slip markers as you come to them.

Body

With smaller size 24" circular, CO 80 (88, 100, 108, 116, 128) sts, pm, CO 80 (88, 100, 108, 116, 128) sts, pm and join for working in the round – 160 (176, 200, 216, 232, 256) sts.

Rnd 1: *P1, (k2, p2) 3 (4, 5, 6, 7, 8) times, k6, (p2, k2) 10 (10, 11, 11, 11, 12) times, p2, k6, (p2, k2) 3 (4, 5, 6, 7, 8) times, p1, sl m; rep from *.

Rnd 2: Work as for Rnd 1.

Rnd 3: *P1, (k2, p2) 1 (2, 3, 4, 5, 6) times, k2, p1, pm (different color than for side), work Row 1 of cable chart across next 16 sts, pm (different color than for side), p1, (k2, p2) 7 (7, 8, 8, 8, 9) times, k2, p1, work Row 1 of cable chart across next 16 sts, p1, (k2, p2) 1 (2, 3, 4, 5, 6) times, k2, p1, sl m; rep from *.

Rnd 4: *P1, (k2, p2) 1 (2, 3, 4, 5, 6) times, k2, p1, work Row 2 of cable chart across next 16 sts, p1, (k2, p2) 7 (7, 8, 8, 8, 9) times, k2, p1, work Row 2 of cable chart across next 16 sts, p1, (k2, p2) 1 (2, 3, 4, 5, 6) times, k2, p1, sl m, rep from *.

Cont, working in rib and charted cable patts as set until piece measures 2½" / 6cm.

Keeping cable panels as set throughout, cont as foll:

Inc Rnd:

Size XS: *(K2, m1) 3 times, k2, cable panel, (k10, m1) 3 times, k2, cable panel, (k2, m1) 3 times, k2; rep from * – 178 sts.

Size S: *(K3, m1) 4 times, cable panel, (k10, m1) 3 times, k2, cable panel, (k3, m1) 4 times; rep from * – 198 sts.

Size M: *(K4, m1) 4 times, cable panel, k18, m1, k18, cable panel, (k4, m1) 4 times; rep from * – 218 sts.

Size L: *(K6, m1) 3 times, k2, cable, (k7, m1) 5 times, k1, cable, (k6, m1) 3 times, k2; rep from * – 238 sts.

Size XL: *(K12, m1) 2 times, cable, (k5, m1) 7 times, k1, cable, (k12, m1) 2 times; rep from * – 254 sts.

Size XXL: *(K9, m1) 3 times, k1, cable, (k13, m1) 3 times, k1, cable, (k9, m1) 3 times, k1; rep from * – 274 sts.

All sizes: Next rnd: With larger size circular needle, *K11 (16, 20, 23, 26, 31), work cable panel, work center panel over next 35 (35, 37, 41, 43, 43) sts as foll:

Size XS: K1, (p1, k3) 8 times, p1, k1.

Size S: K1, (p1, k3) 8 times, p1, k1.

Size M: K2, (p1, k3) 8 times, p1, k2.

Size L: (p1, k3) 10 times, p1.

Size XL: K1, p1, k3, (p1, k3) 9 times, p1, k1.

Size XXL: K1, p1, k3, (p1, k3) 9 times, p1, k1.

All sizes: Cont around, working cable panel, k11 (16, 20, 23, 26, 31); rep from *.

Next rnd: *K11 (16, 20, 23, 26, 31), work cable panel, k35 (35, 37, 41, 43, 43), work cable panel, k11 (16, 20, 23, 26, 31); rep from *.

Next rnd: *K11 (16, 20, 23, 26, 31), work cable panel, work center panel over next 35 (35, 37, 41, 43, 43) sts as foll:

Size XS: K3, (p1, k3) 8 times,

Size S: K3, (p1, k3) 8 times,

Size M: (P1, k3) 9 times, p1,

Size L: K2, (p1, k3) 9 times, p1, k2,

Size XL: K3, (p1, k3) 10 times,

Size XXL: K3, (p1, k3) 10 times,

Cont around, working cable panel, k11 (16, 20, 23, 26, 31); rep from *.

Next rnd: *K11 (16, 20, 23, 26, 31), work cable panel, k35 (35, 37, 41, 43, 43), work cable panel, k11 (16, 20, 23, 26, 31); rep from *.

Cont as set, keeping cable panels and center panel correct throughout until piece measures 13¾ (13¾, 13¾, 13, 12¾, 12)" / 34.5 (34.5, 34.5, 33, 32, 30)cm or desired length to underarm.

Work across front sts until 7 (8, 8, 9, 10, 11) sts before side m, BO 14 (16, 16, 18, 20, 22) sts for underarm, remove side m, work across back sts until 7 (8, 8, 9, 10, 11) sts before side, BO 14 (16, 16, 18, 20, 22) sts, remove m – 150 (166, 186, 202, 214, 230) sts remain on body. Taking note of what rnd you have just completed, leave all sts on needle, and set body of sweater aside. *Do not cut yarn.*

SLEEVES (make both alike)

With smaller size dpn, CO 48 (48, 56, 56, 64, 64). Pm and join for working in the round.

Rnd 1: P1, (k2, p2) 5 (5, 6, 6, 7, 7) times, k6, (p2, k2) 5 (5, 6, 6, 7, 7) times, p1.

Rnd 2: Work as for Rnd 1.

Rnd 3: P1, (k2, p2) 3 (3, 4, 4, 5, 5) times, k2, p1, work Row 1 of cable panel across next 16 sts, p1, (k2, p2) 3 (3, 4, 4, 5, 5) times, k2, p1.

Rnd 4: P1, (k2, p2) 3 (3, 4, 4, 5, 5) times, k2, p1, work Row 2 of cable panel across next 16 sts, p1, (k2, p2) 3 (3, 4, 4, 5, 5) times, k2, p1.

Cont, working cable and rib patts as set. Work until sleeve measures 3" / 7.5cm.

Next rnd: K16 (16, 20, 20, 24, 24), work cable panel, k16 (16, 20, 20, 24, 24).

Cont, working St st and cable patts as set throughout, *AND, AT THE SAME TIME*, shaping sleeve as foll:



directed otherwise. Cont to work raglan dec's every 2nd (RS) row along with any additional shaping.

Next row (WS): Work across row to end, in patt as set.

Cont raglan decreases on every RS row *AND, AT THE SAME TIME*, dec 1 st at each neck edge (dec on right side of neck with ssk and on left side with k2tog) on every RS row 4 (4, 5, 5, 5) times.

Now work raglan decreases as set with no further neck shaping 4 (6, 5, 5, 7, 8) more times – 73 (85, 87, 95, 101, 97) sts.

FINISHING

Neckband: With smaller size 16" / 40cm circular, work (k2, p2) ribbing across all sts to end of row, then pick up and k sts around remaining neck edge for a total of 108 (108, 116, 128, 132, 132) sts. Cont in k2, p2 rib for 1" / 2.5cm.

BO loosely in rib. Graft underarms. Weave in ends and block sweater to measurements.

Inc Rnd: K2, M1, k14 (14, 18, 18, 22, 22), work cable panel, k14 (14, 18, 18, 22, 22), m1, k2.

Change to larger size dpn.

Next rnd: K16 (16, 20, 20, 24, 24), work cable panel, k16 (16, 20, 20, 24, 24).

Cont as set, working an inc rnd every 8th (4th, 4th, 4th, 4th, 2nd) rnd 11 (17, 17, 21, 21, 27) more times -72 (84, 92, 100, 108, 120) sts.

Work even until sleeve measures 16½ (17, 17, 17½, 17½, 17½)" / 41 (43, 43, 44, 44, 44) cm.

Next rnd: Work around sleeve until 7 (8, 8, 9, 10, 11) sts before marker for end of rnd, BO 14 (16, 16, 18, 20, 22) underarm sts, remove marker – 58 (68, 76, 82, 88, 98) sts remain. Cut yarn and set sleeve aside, putting sts on waste yarn or a spare needle.

YOKE

With the working yarn still attached to the front, work around as foll, removing markers for cable panels and pm as indicated for raglan shaping:

Work across front in patt as established, pm, work across sleeve sts in patt as established, pm, work across back in patt as established, pm, work across sts of second sleeve in patt as established, pm for beg of rnd – 266 (302, 338, 366, 390, 426) sts total.

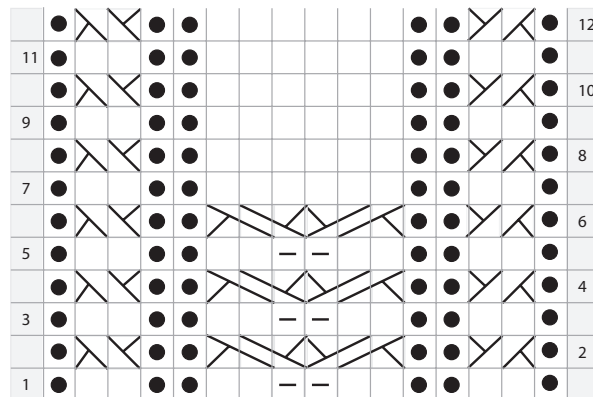
Dec Rnd: *K1, ssk, work across in patt until 3 sts before marker, k2tog, k1, sl m; rep from * around – 8 sts dec'd.

Next 3 rnds: Work around in patt without dec.




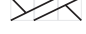

Rep last 4 rnds 10 (9, 7, 9, 9, 8) more times, changing to dpn or shorter circular when work will no longer fit around needle – 178 (222, 274, 286, 310, 354) sts.

Now dec as set on every other rnd 0 (2, 8, 8, 8, 13) times – 178 (206, 210, 222, 246, 250) sts. Work 1 rnd without dec.

Next rnd: Work around in patt and work raglan decs *AND, AT THE SAME TIME*, BO 25 (25, 25, 29, 31, 31) sts at center front for front neck. Cont working, keeping patt as set, until you reach the edge of the newly established front neck shaping. Turn work. From this point, the sweater is worked back and forth in rows until



Legend:

-  **K on RS, P on WS**
-  **P on RS, K on WS**
-  **Slip WYIF**
(WS): Sl st as if to p, with yarn in back.
-  **Cross 1 over 2 right:** sl 2 sts to cable needle, hold to back, k1, k2 from cable needle.
-  **Cross 1 over 2 left:** sl 1 st to cable needle, hold in front, k2, k1 from cable needle.

